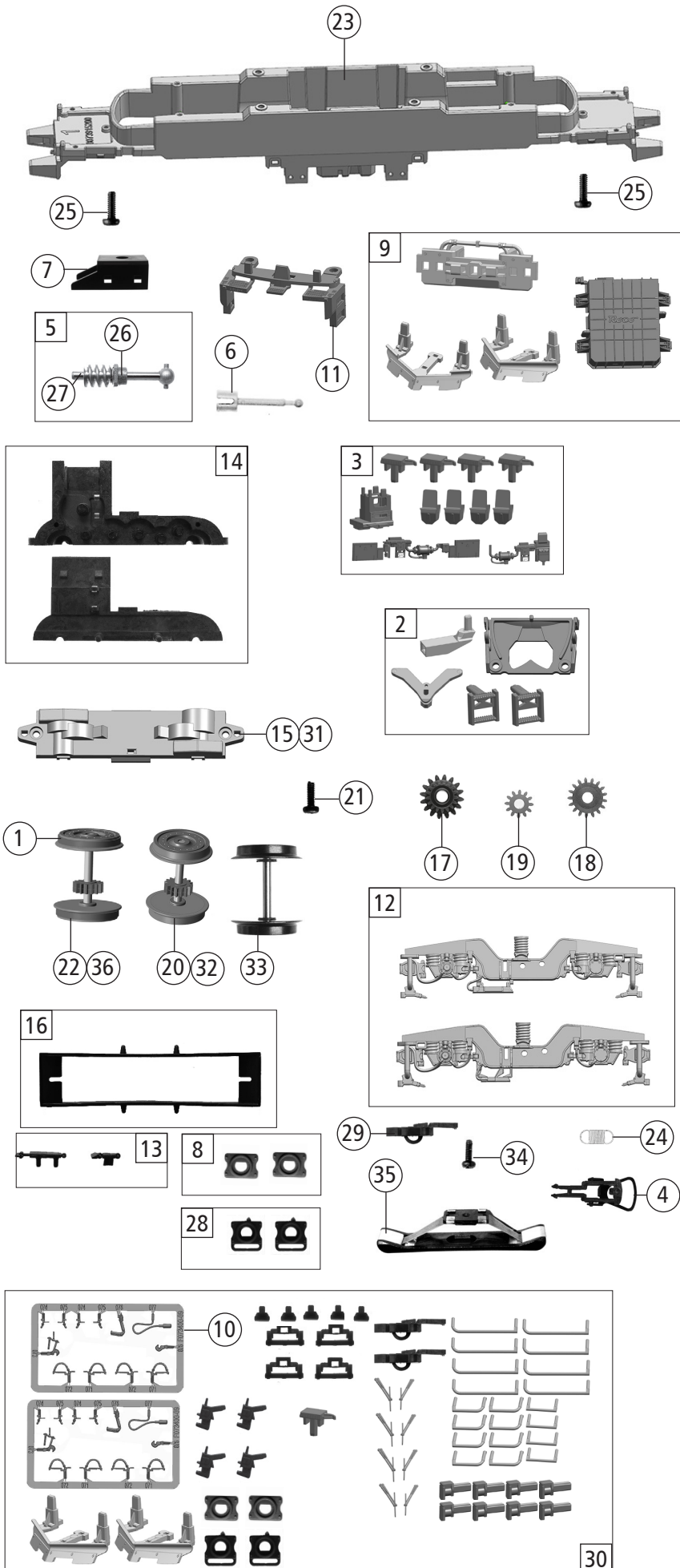


| Pos. Nr. Pos.no. | Beschreibung Description | Art.-Nr. Art.no. | Preisgruppe Price bracket |
|---------------------|---|---------------------|------------------------------|
| 71926 | Rail Force One VECTRON | = | |
| 71927 | | = | 🔊 |
| 79927 | | ~ | 🔊 |
| 1 | Gehäuse kpl.Betr. Nr. 6193 623-6 Body complete Loco no. 6193 623-6 | 144346 | 33 |
| 2 | Stirn- + Seitenfenster Front and side window | 143901 | 9 |
| 3 | TS - Lichtleiter Part set - Light conductor | 141148 | 14 |
| 4 | Führerstand + Himmel Driver's cab and ceiling | 141149 | 8 |
| 5 | E-Lokführer E-loco driver | 110407 | 6 |
| 6 | TS - Dachgitter, ... Part set roof grid | 141150 | 10 |
| 7 | Antenne kurz Antenna short | 141151 | 3 |
| 8 | Antenne lang Antenna long | 141200 | 3 |
| 9 | Antenne Antenna | 141152 | 3 |
| 10 | Frontplatte + Scheinwerfer Front plate + headlight | 144351 | 14 |
| 11 | Türgriff Door handrail | 141154 | 4 |
| 12 | Dachbaugruppe kpl. Roof assy complete | 144347 | 35 |
| 13 | Verteilerplatte Distribution plate | 141583 | 3 |
| 14 | Stromabnehmer Typ 8 Pantograph Typ 8 | 85488 | 23 |
| 15 | TS-Wischer links und rechts,Horn Part set wiper left and right,signal horn | 141155 | 6 |
| 16 | TS - Isolatoren Part set isolators | 141156 | 5 |
| 17 | TS - Isolatoren Part set isolators | 115978 | 7 |
| 18 | Dachleitung Roof wires | 141557 | 12 |
| 19 | SK-Schraube M1,6x7 mm Self-tapping screw M1,6x7 mm | 116493 | 3 |
| 20 | TS - Abdeckungen Part set covers | 141137 | 4 |
| 21 | Platine kpl. m. LED-Pl. o.Anz. PCB complete w. LED-PCB | 141138 | 24 |
| 22 | Brückenstecker - Plux16 TVS Jumper - Plux16 TVS | 133241 | 10 |
| 23 | Motor m. 2Schwungm.+Kardansch. Motor with 2 flywheels and cardan reception | 85112 | 28 |
| 24 | Kardanschale kurz 1,5 mm Cardan reception short 1,5mm | 87129 | 4 |
| 25 | Kohlebürste Carbon brush | 89743 | 6 |
| 26 | Bürstenfeder D=2,8/1,6 L=8 mm Brush spring | 114197 | 3 |
| 27 | Motordämpfer Motor silencer | 113376 | 4 |
| 28 | TS - Lautsprecherbox + Platten Part set loudspeaker box and plates | 141139 | 5 |
| 29 | Puffer eckig Rectangular buffer | 122789 | 3 |
| 30 | GF-Schraube M2x5 mm Self-tapping screw M2,2x5 mm | 114966 | 3 |
| 31 | Kontaktfeder D=2,4 L=11,6 mm Contact spring | 116876 | 3 |
| 32 | Steckdose Socket | 141163 | 3 |
| 33 | Stromabnehmer Holland Pantograph Holland | 85401 | 23 |
| 34 | TS - Griffe - schwarz Part set handles black | 141238 | 6 |
| 35 | UIC-Dose UIC-Socket | 141559 | 3 |
| 36 | Innenbeleuchtung Interior lighting | 141659 | 4 |
| 37 | TS - LZB Antennen Part set - Antenna | 122803 | 6 |
| Sound | | | |
| 38 | Platine kpl.m.LED-Platine f. So. PCB complete with LED-PCB f. S. | 141166 | 28 |
| 39 | Sounddecoder Sound-decoder | 129000 | 39 |
| 40 | Lautsprecher Loudspeaker | 129524 | 14 |



| 71926 | | Rail Force One | VECTRON | = | |
|------------------------|---|---------------------|------------------------------|---|---|
| 71927 | | | | = | 🔊 |
| 79927 | | | | ~ | 🔊 |
| Pos. Nr. Pos.no. | Beschreibung Description | Art.-Nr. Art.no. | Preisgruppe Price bracket | | |
| 1 | Haftrings.10Stk.12,9 bis 14,6mm Traction tyre set,10 pcs.,12,9-14,6 mm | 40070 | --- | | |
| 2 | TS - Kinematik, Deichsel, ... Part set kinematics and drawbar | 141136 | 8 | | |
| 3 | TS - Sandkasten, Antenne, ... Part set sand box,antenna | 141144 | 7 | | |
| 4 | Standardkupplung Standard coupling | 89246 | 6 | | |
| 5 | Schneckensatz mit Kardankugel Set of worm gear incl.cardan ball | 110377 | 13 | | |
| 6 | Kardanwelle 24,7 mm Cardan shaft 24,7mm | 107011 | 4 | | |
| 7 | Schneckendeckel Worm gear cover | 122822 | 4 | | |
| 8 | Pufferflansch links und rechts Buffer flange left and right | 136487 | 5 | | |
| 9 | TS-SchieneREnräumeR,trafowanne Part set rail guard,transformer tub | 141140 | 12 | | |
| 10 | TS - Bremsschläuche + Zughaken Part set of brake tubes & coupling hooks | 139832 | 7 | | |
| 11 | Schürze lang Skirt long | 144345 | 10 | | |
| 12 | DG-Blende l+r 2tlg. Bogie left and right 2 parts | 141194 | 12 | | |
| 13 | TS - Blendesteckt. Set of cover plug-in parts | 122956 | 5 | | |
| 14 | Getriebebesatz 2-tlg. Gear set 2-parts | 122816 | 11 | | |
| 15 | Getriebeboden Gear bottom | 141159 | 7 | | |
| 16 | Kontaktalter mit Litzen Contact support with leads | 137826 | 9 | | |
| 17 | Schneckenrad doppelt Z=16/17 Worm gear wheel double Z=16/17 | 86419 | 6 | | |
| 18 | Zahnrad Z=17 M=0,4 Gear wheel Z=17 M=0,4 | 127541 | 4 | | |
| 19 | Zahnrad Z=12 M0,4 Gear wheel Z=12 M0,4 | 127542 | 4 | | |
| 20 | Radsatz m. Zahnrad o. Haftring Wheelset w.gear wheel w/o traction tyre | 141160 | 12 | | |
| 21 | GF-Schraube M1,6x4 mm Self-tapping screw M1,6x4 mm | 114850 | 3 | | |
| 22 | Radsatz m.2 Haftringen+Zahnrad Wheelset w.2 traction tyres w.gear wheel | 141161 | 13 | | |
| 23 | Grundrahmen Basic frame | 141135 | 16 | | |
| 24 | Zugfeder - 2,5x5,8x0,15 mm Draw spring - 2,5x5,8x0,15 mm | 86208 | 3 | | |
| 25 | GF-Schraube M2x6 mm Self-tapping screw M2x6 mm | 114828 | 3 | | |
| 26 | Lager f. Schneckenachse D=2H7 Bearing for worm gear axle | 89749 | 6 | | |
| 27 | Beilagescheibe 2,1x4/0,2mm Washer 2,1x4/0,2mm | 86108 | 3 | | |
| 28 | Pufferflansch links und rechts Vitrine Buffer flange left and right for showcase | 141162 | 4 | | |
| 29 | Kurzkupplung - Vorentkupplung Short coupling - pre-uncoupling | 115550 | 6 | | |
| 30 | Zurüstbeutel Bag of accessories | 144348 | 19 | | |
| AC-Wechselstrom | | | | | |
| 31 | Getriebeboden AC Gear bottom AC | 130040 | 8 | | |
| 32 | Radsatz m.Zahnrad o.Haftring AC Wheelset w.gear wheel w/o traction tyre AC | 141167 | 12 | | |
| 33 | Radsatz o.Haftring o.Zahnrad AC Wheelset w/o traction tyre w/o gear wheel AC | 141242 | 11 | | |
| 34 | Schraube M1,5x5 mm Screw M1,5x5 mm | 108137 | 3 | | |
| 35 | Schleifer 42 mm o. Halteklammer Center pick-up 42 mm | 86030 | 14 | | |
| 36 | Radsatz m.2 Haftringen m.Zahnrad AC Wheelset w.2 traction tyres w.gear wheel AC | 141168 | 13 | | |

Ersatzteile erhalten Sie direkt unter www.roco.cc, bei Ihrem Fachhändler oder Ihrer Landesvertretung:
Spare parts can be ordered directly at www.roco.cc and from your local dealer or country representative.